



RCMAS
RAJAGIRI COLLEGE OF MANAGEMENT &
APPLIED SCIENCES

Criterion VII Institutional Values and Best Practices

RAJAGIRI COLLEGE OF MANAGEMENT AND APPLIED SCIENCES

RAJAGIRI VALLEY P.O, KAKKANAD, KERALA 682039

An ISO 9001 : 2015 Certified Institution

Affiliated to Mahatma Gandhi University, Kottayam and Approved by AICTE

7.1

Institutional Values and Social Responsibilities

7.1.2

Photos of Green Campus Initiatives

2019-2024

Submitted to



7.1.2 Green Campus Initiatives

INDEX

Sl. No.	Green Initiatives	Page No.
1.	Pedestrian-friendly Pathways	4
2.	Restricted Entry of Vehicles during Working Hours	5
3.	Restricted use of Plastic on the College Campus	6
4.	Encouraging Electric Vehicles & Bicycles on Campus	7
5.	Landscaping with Trees	8
6.	Diverse ecosystem of the campus: A haven for flora <ul style="list-style-type: none"> • Shalabodhyan • Pachakkarithottam (Vegetable Garden) • Oushadodhyan • Nakshatravanam • Fruit Garden • Spice Garden 	9-14
7.	Oxygen Zone	14
8.	Fish Farming	15
9.	Biodiversity Register : Documentation of Flora and Fauna of RCMAS	15
10.	Indoor Plants Green Staffroom/Classroom	16
11.	Vertical Garden around Mazhakkuzhi	17
12.	Aviary	18
	The Animal Ark (Pet Zoo)	19



Legal

14.	Paddy Cultivation	20
15.	Water Conservation Initiatives	21
16.	Energy Conservation Initiatives	22

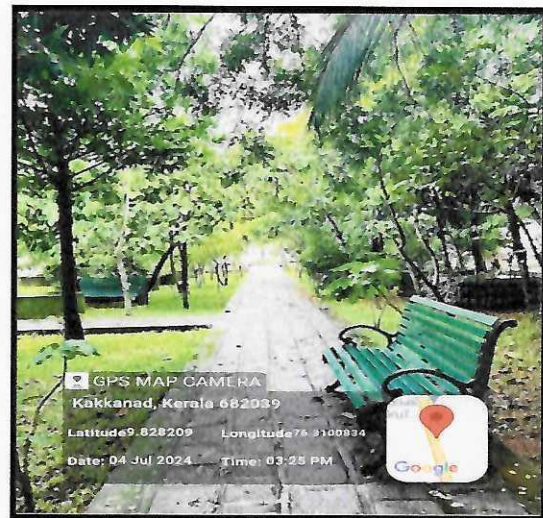
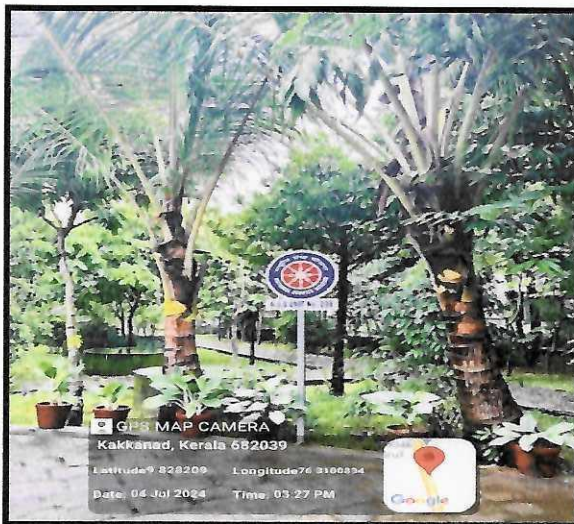


Legal

Photos of Green Campus Initiatives

1. Pedestrian-friendly Pathways

In line with Rajagiri's green vision, the campus is threaded with pedestrian-friendly pathways adorned with eco-friendly tiles and promotes a stronger sense of community by creating a more inviting and walkable atmosphere.



Pedestrian-friendly walkways

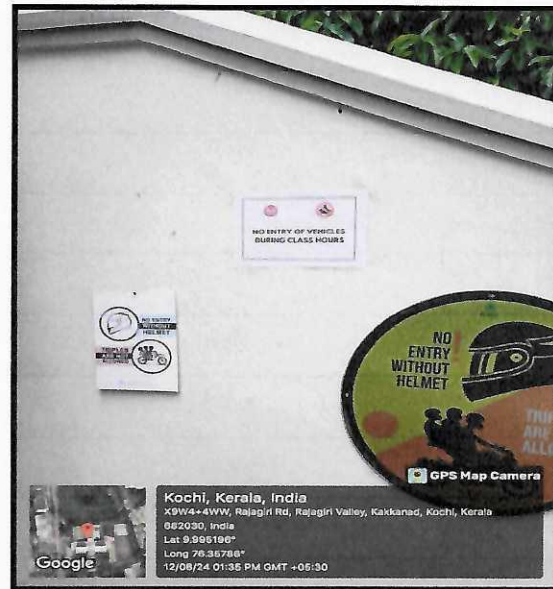
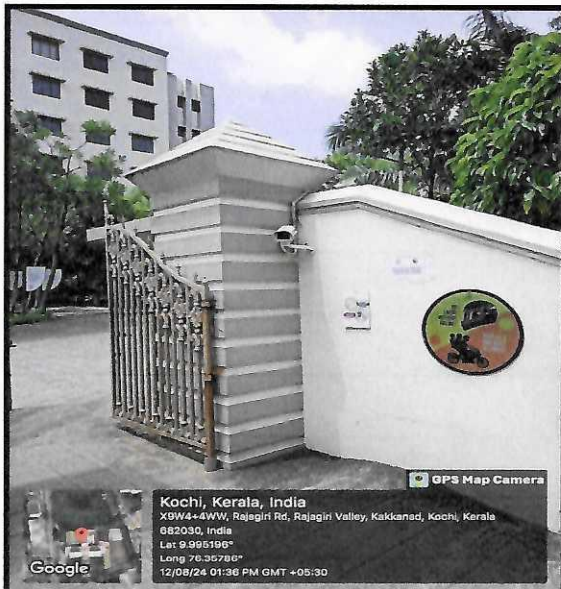
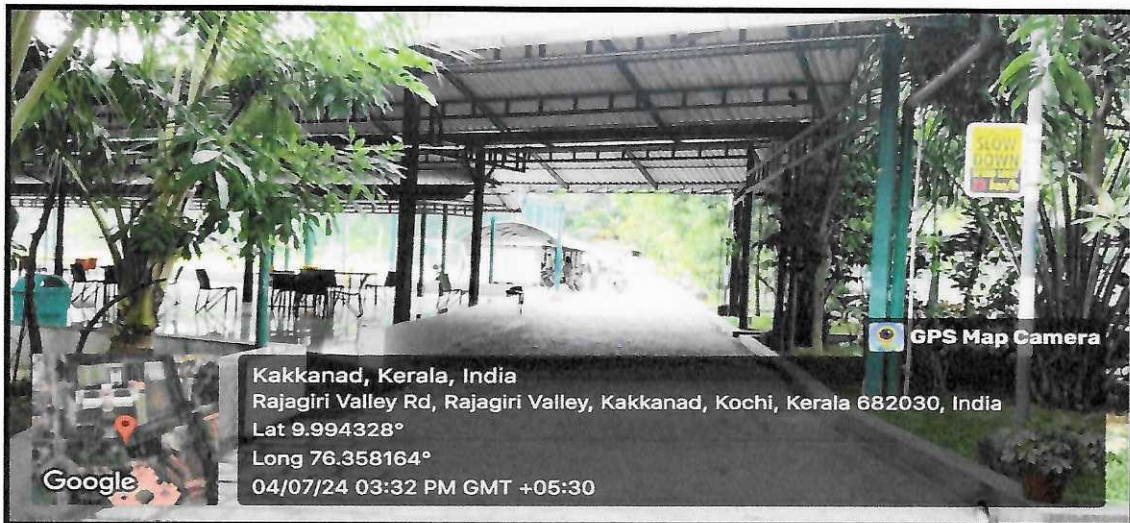


Legat

2. Restricted Entry of Vehicles during Working Hours.

To further solidify its commitment to a sustainable campus environment, the College implements a restricted vehicle entry policy, especially during the working hours with speed limits signage inside the premises.

Signage of Speed Limit and Restricted Entry of Vehicles

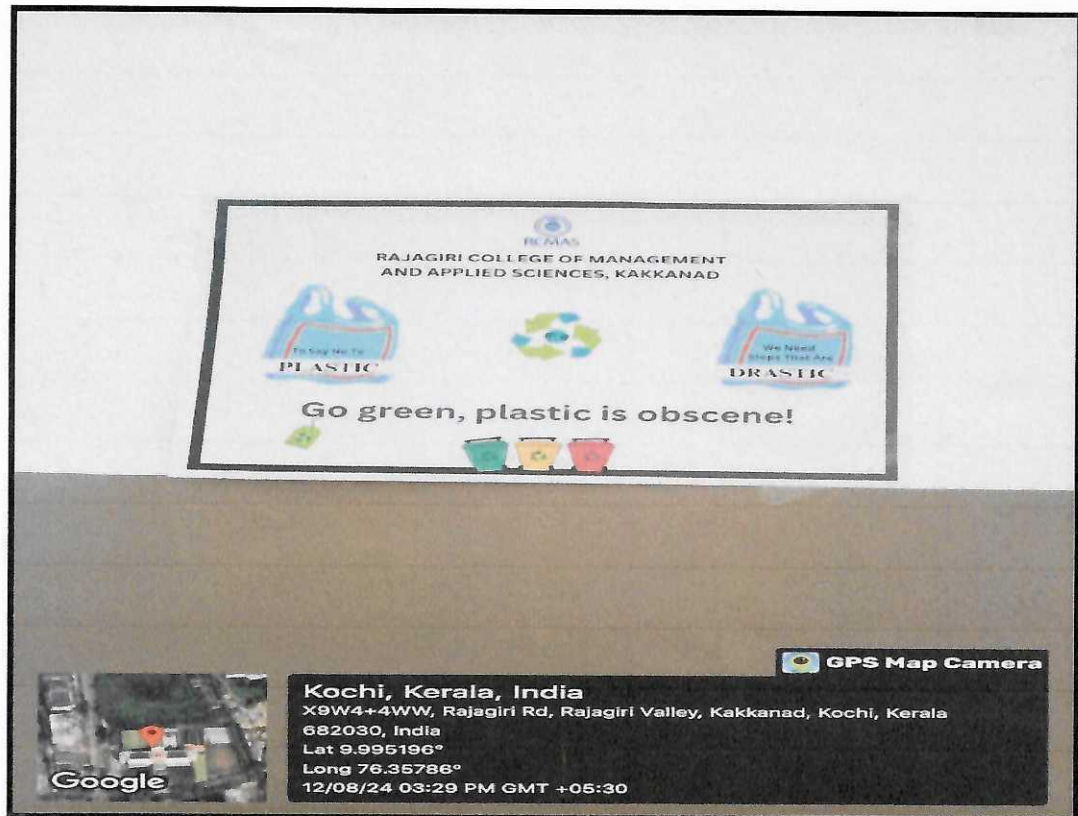


Legal

3. Restricted use of Plastic on the campus

The College has enforced a restriction on single-use plastics. This initiative targets a significant contributor to global environmental pollution – plastic waste.

Poster of Restricted use of Plastic



Legal

4. Encouraging Electric and Eco-friendly Vehicles on Campus

Rajagiri College actively promotes the use of electric vehicles (EVs) on campus as a viable mode of transportation. The institution also promotes using bicycles as a commendable sustainable practice.

Bicycle and EV Charging Points



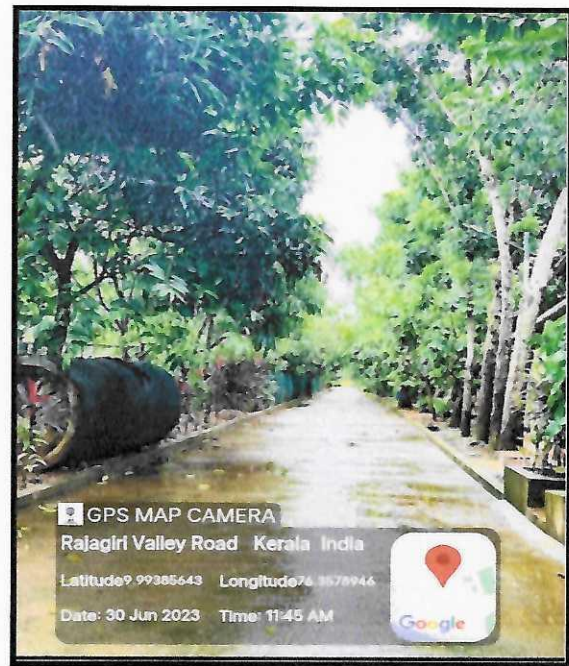
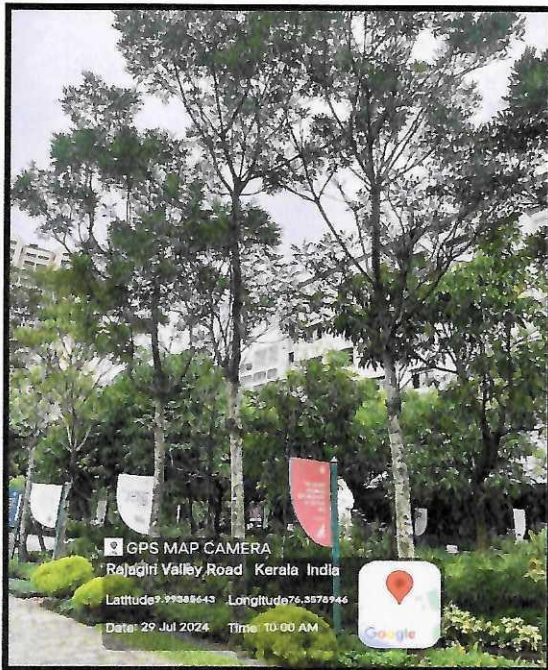
EV Charging from the Electric Charging Point



Legal

5. Landscaping with Trees

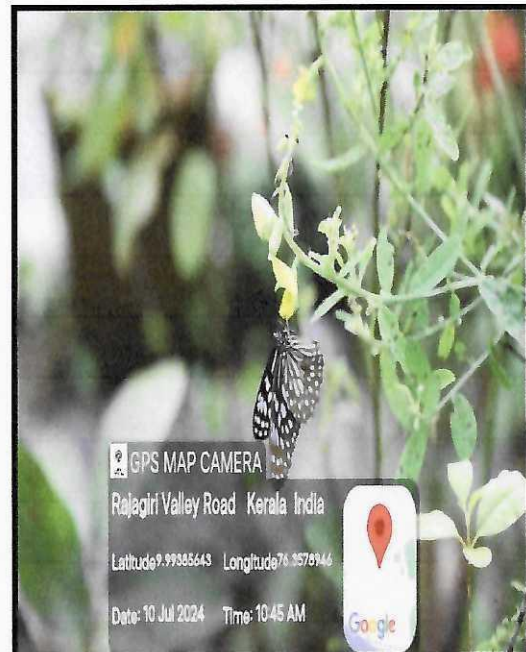
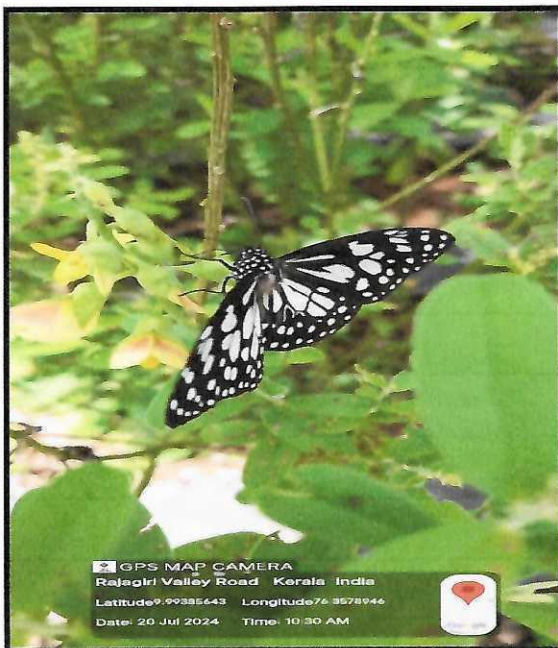
The institution exemplifies how incorporating trees into campus landscapes fosters a thriving and sustainable environment. These trees create a beautiful and serene atmosphere, promoting student and staff well-being.



6. Diverse Ecosystem Of The Campus: A Haven For Flora

The vibrantly coloured butterfly garden called **Shalabodhyan**, meticulously planted with nectar-rich flowers, attracts these delicate pollinators, playing a vital role in supporting local ecosystem health.

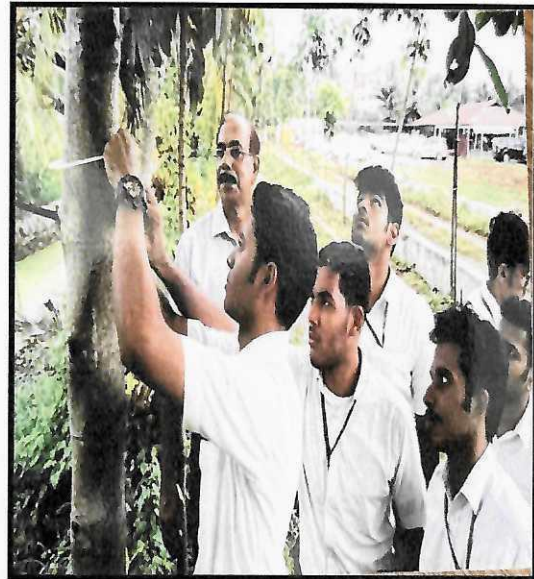
Butterflies in Shalabodhyan



Legal

Further enriching the landscape is the **Nakshatravanam**, a thoughtfully curated collection of 27 diverse tree species named after celestial constellations of lunar birth stars.

Nakshatravanam



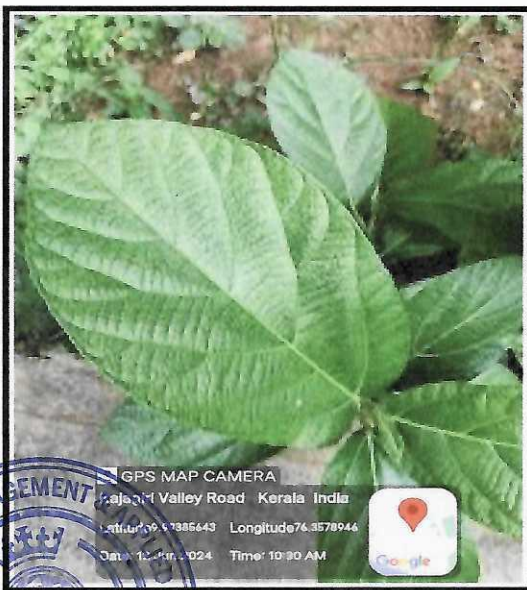
Legal

Pachakkarithottam (Vegetable Garden)



Oushadodhyan

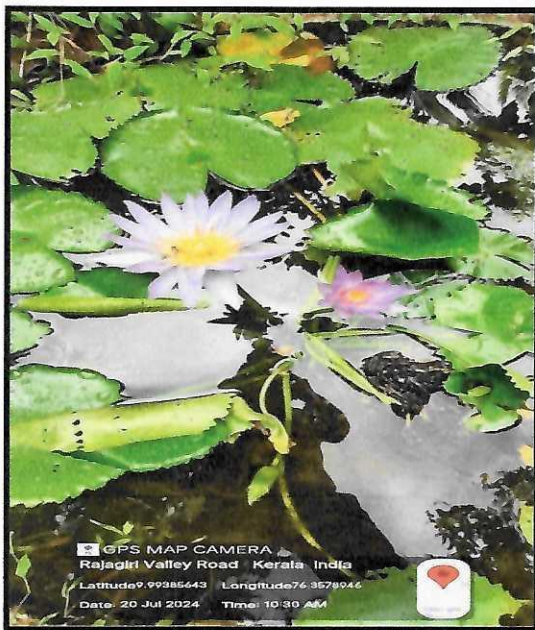
Yet another green feature the College owns is the verdant haven of medicinal herbs called **Oushadodhyan**. The distinct collection of plants and herbs with its unique therapeutic properties was created to promote the concept of health and well-being by exploring the power of nature's pharmacy.



Legend

Various kinds of Flowering Plants on the Campus

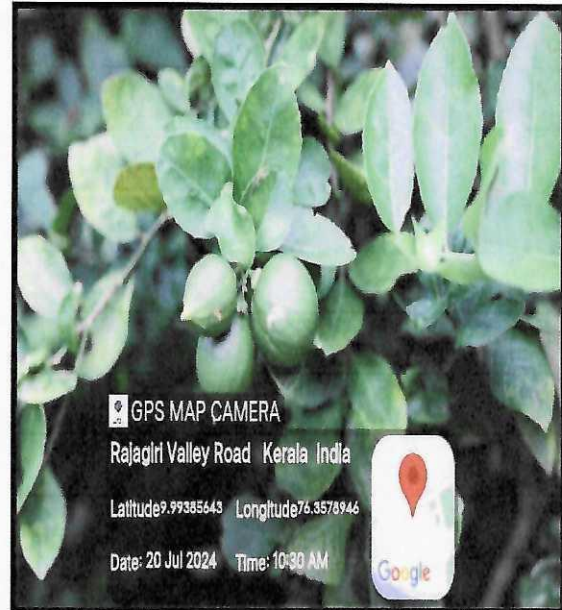
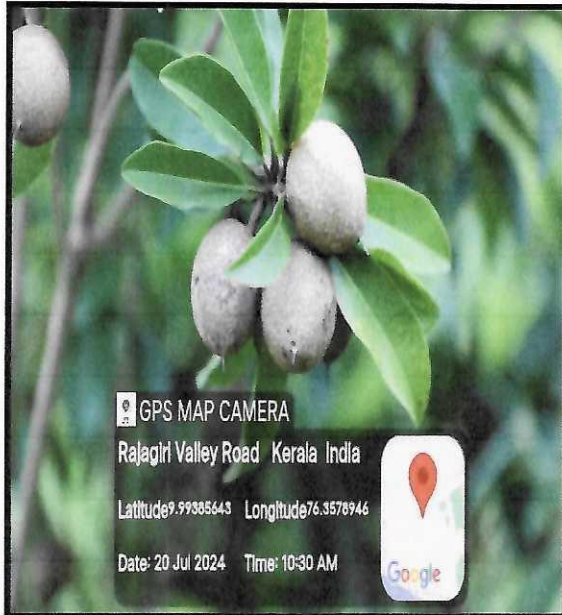
The campus boasts a wide array of **flowering and ornamental plants** further enriching the landscape with pops of colour and fragrance. The College also maintains a **Herbarium** as a valuable resource for environmental research and conservation and has a **space for meditation** adjacent to the chapel.



Legal

Fruit Garden is a wonderful fruit orchard featuring an array of species including water apples, star fruits, guavas, dragon fruit and the like on both sides of the college entrance and the backyard.

Sapota, Guava and Custard Apple in the Fruit Garden



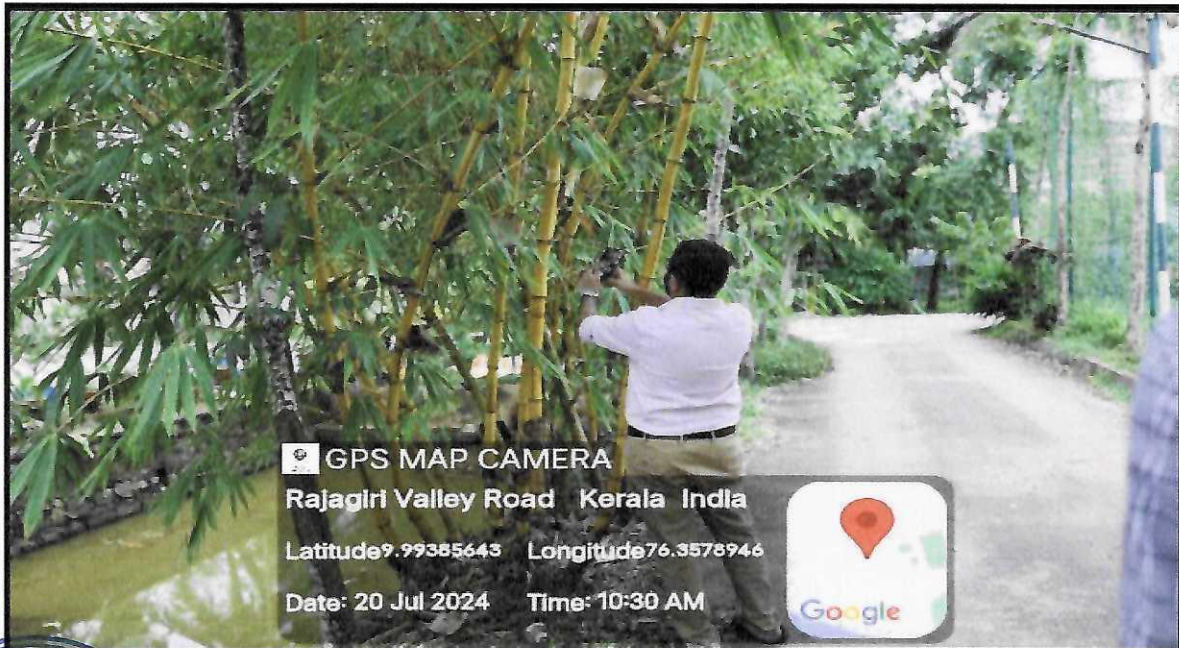
Legal

Pepper in the Spice garden



7. Oxygen Zone

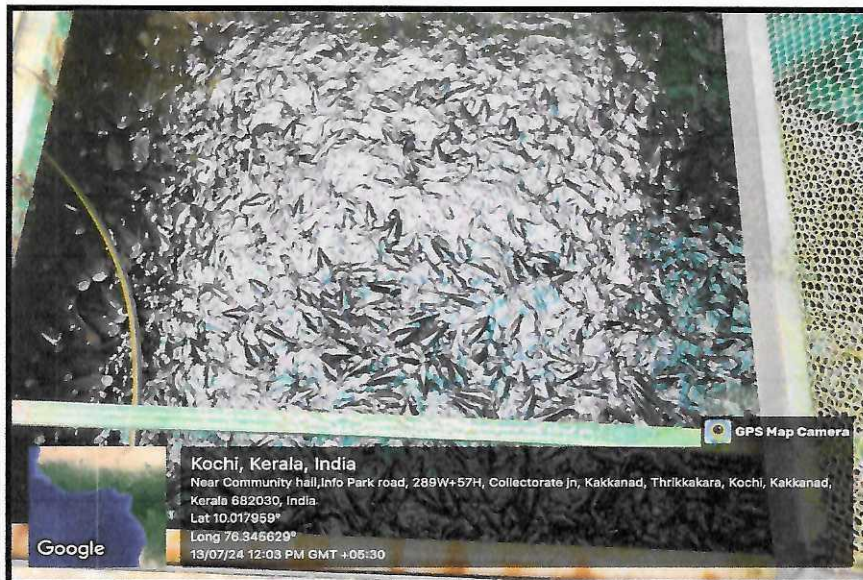
The HEI has established an oxygen zone adjacent to the portico and bordering the water canal. This novel strategy, consisting primarily of **bamboo**, increases oxygen levels and reduces pollutants.



8. Fish Farming

The college successfully cultivates the fish species **Tilapia** known for their high nutritional value and adaptability. What sets this initiative apart is its integration with the campus Aviary, which doubles as a rainwater harvesting system, creating an integrated relationship between different ecological elements.

Farming of Tilapia



9. Biodiversity Register- Documentation of Flora and Fauna

The College further demonstrates its allegiance to both biodiversity conservation and environmental education through the compilation of a **Biodiversity Register- a documentation of campus flora of RCMAS**. Classifying flora combines a comprehensive new resource- a strategically deployed QR code system on the trees on the campus.

Website link: <https://www.rajagiricollege.edu.in/rajeevani-post/>

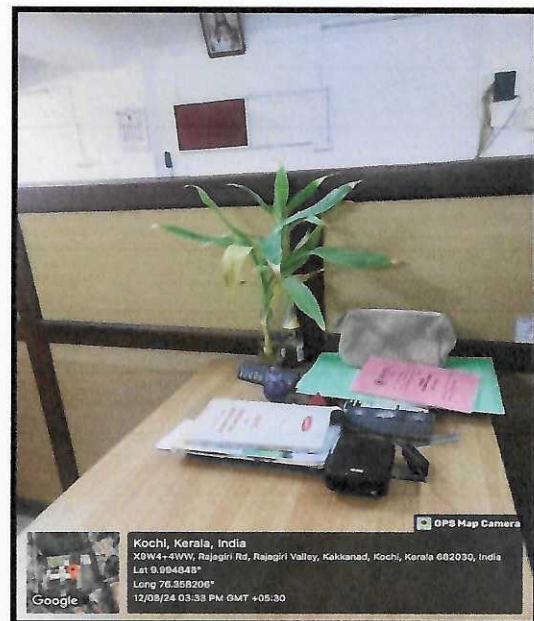


Legal

10. Indoor Plants- Green Staffroom/Classroom

The College has incorporated indoor plants within its academic departments and classrooms as part of their green initiatives which transcends mere aesthetics.

Indoor plants in Classroom and Staffroom

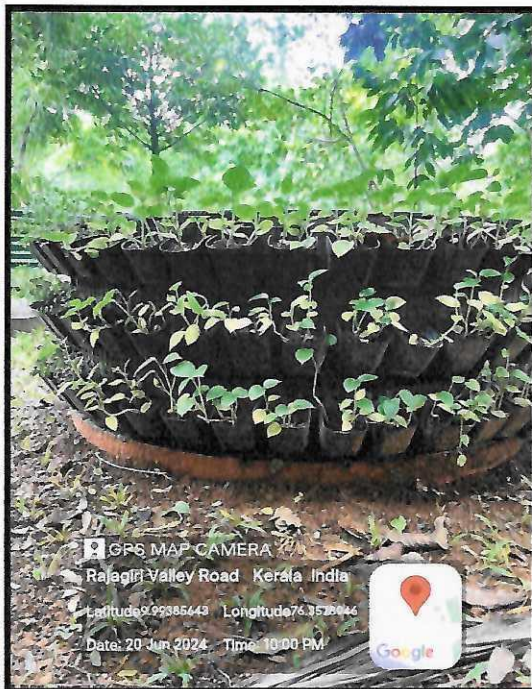


Ugma

11. Vertical Gardens around Mazakkuzhi

Vertical gardens have been created around Mahakkuzhi, a collection of small wells at the entrance plaza of the College. These vertical gardens not only enhance the beauty of the well but also promote environmental sustainability.

Vertical Garden around Mazhakkuzhi

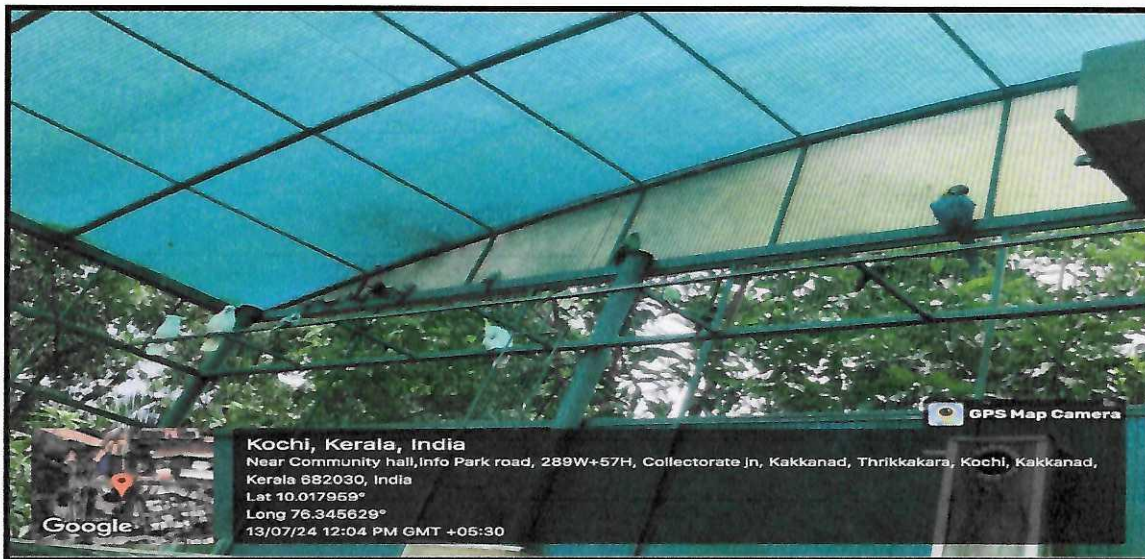


Legend

12. Aviary

Adding another feather to campus biodiversity is a marvellously designed aviary. This structure houses a captivating collection of rare bird species like Macaw, Eclectus, White Cocotto, Grey Parrot, Love birds, a variety of pheasants and the like providing students with a unique opportunity to observe these magnificent creatures firsthand.

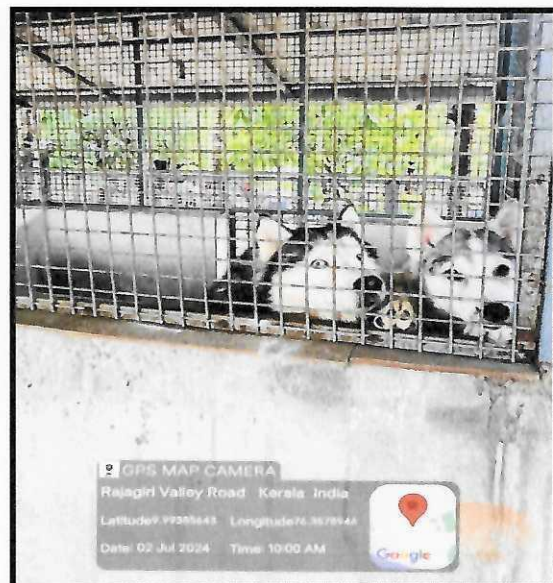
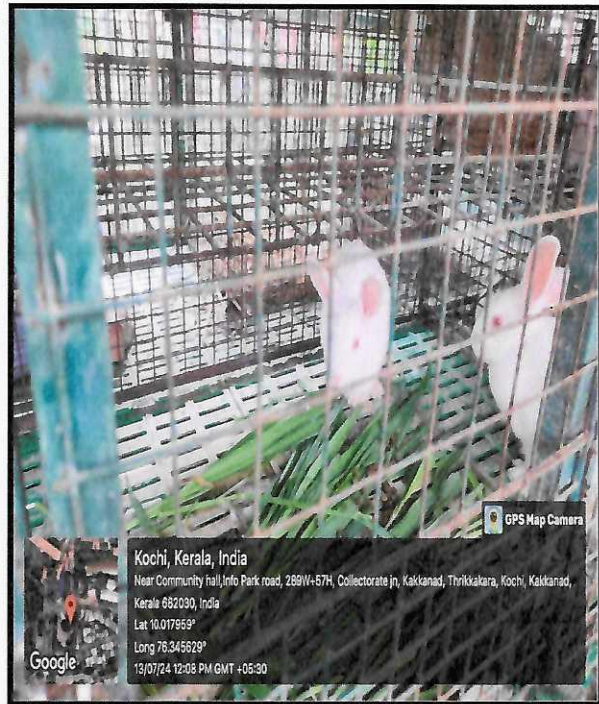
Birds in the Aviary



Legal

13. RCMAS Animal Ark

The college further enriches the student experience by incorporating an area of shelter featuring various breeds of native and foreign dogs. There is also a space adjacent to it for rearing rabbits. Rounding out the on-campus fauna is a collection of various types of fowls, including swans and turkeys.



Legal

14. Paddy cultivation

The college also undertook a unique agricultural project, bringing together students and faculty for hands-on paddy cultivation of Pokkali. The initiative not only offered practical learning experiences but also strengthened the knowledge in agriculture. In a fitting celebration of their collective effort, the team transformed their harvest into **payasam**, a cherished traditional dessert.



Students planting paddy seedlings



Legal

15. Water Conservation Initiatives

The college has implemented robust water conservation initiatives that significantly benefit both the students and the ecosystem. It has installed advanced rainwater harvesting systems, including the innovative *Mazakkuzhi* method and a canal system on one side of the campus which efficiently collects and stores rainwater for various uses.

Mazhakkuzhi



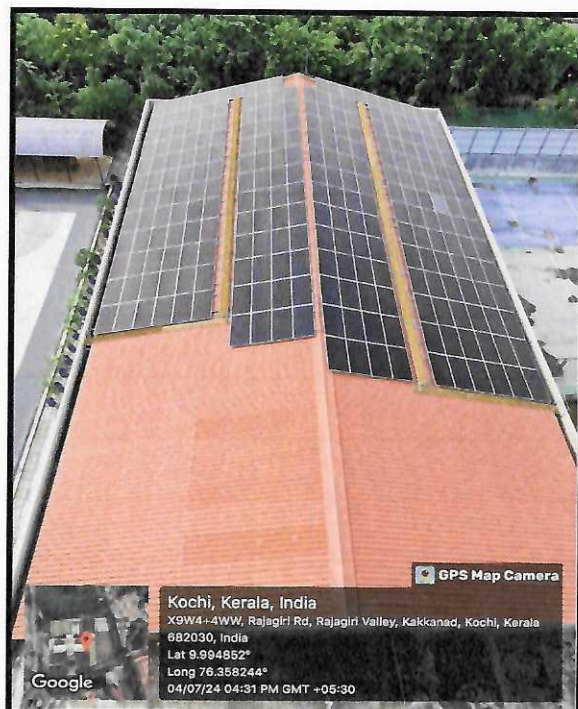
Save water signage



16. Energy Conservation Initiatives

The College is at the forefront of energy conservation. The installation of solar panels and biogas plant as a stride to renewable energy, significantly reduces reliance on non-renewable power sources.

Biogas Plant and Solar Panels



Through the measures for nurturing biodiversity, reducing waste and conserving resources, the college instills a deep sense of environmental consciousness in its students and staff.



Principal

PRINCIPAL

Rajagiri College of Management & Applied Sciences
Rajagiri Valley, P. O., Kakkanad - 682 039